

▪ **Type:** DLP-04R DIN rail DALI power supply

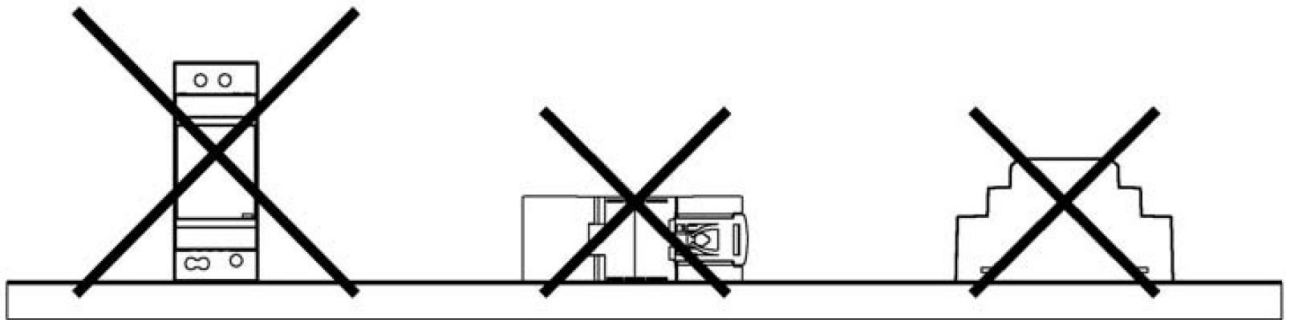
DLP-04R INPUT: 90-264VAC, 0.4A, 50/60Hz OUTPUT: DALI supply, 16V, 0.24A

▪ **Introduction**

The DALI Power Supply DLP-04 is a power supply with high efficiency and a small size, supplying 240mA for DALI control gears and DALI devices without power supply circuits. It is perfectly suitable for powering any products labeled with the DALI trademark.

▪ **Installation**

- (1) Always allow good ventilation clearances, 5mm left and right, 40mm above and 20mm below, around the unit in use to prevent it from overheating. In addition, a 10-15 cm clearance must be kept when the adjacent device is a heat source.
- (2) The appropriate mounting orientation for the unit is vertical, the input terminals at the bottom and output on the top. Mounting orientations other than that, such as upside down, horizontal, or tabletop mounting, is not allowed.



- (3) Use copper wire only, and recommended wires are shown as below.

AWG (American Wire Gauge)	18	16	14
Rated current of equipment [A]	7	10	15
Cross-section of lead [mm ²]	0.8	1.3	2.1
Note: Current each wire carries should be de-rated to 80% of the current suggested above when using 4-6 wires connected to the unit.			

Make sure that all strands of each stranded wire enter the terminal connection and the screw terminals are securely fixed to prevent poor contact. If the power supply possesses multi-output terminals, please make sure each contact is connected to wires to prevent too much current stress on a single contact.

- (4) Use wires that can withstand temperatures of at least 80°C, such as UL1007.
- (5) Recommended wire strapping length is 6mm (0.236").
- (6) Recommended screwdriver is 3mm, slotted type.
- (7) The recommended torque setting for terminals is shown as below.

Modell	I/P	O/P
DLP – 04R	3.4 Nm (3.0 Lbf-in)	5.0 Nm (4.4 Lbf-in)

(8) Mounting Instruction:

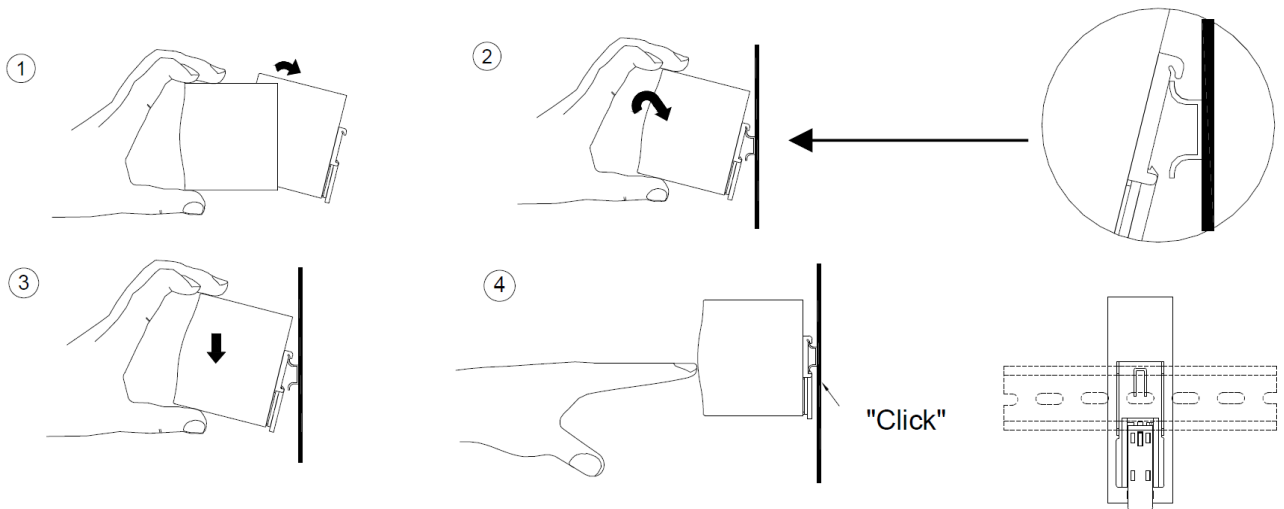
Mount as shown in figure only, with input terminals down, or else sufficient cooling will not be possible.

Admissible DIN rail: TS35/7.5 or TS35/15

For rail fastening:



1. Tilt the unit slightly rearwards.
2. Fit the unit over top hat rail.
3. Slide it downward until it hits the stop.
4. Press against the bottom for locking.
5. Shake the unit slightly to check the locking action.



(9) For other information about the products, please refer to www.meanwell.com for details.

▪ **Warning / Caution !!**

"CAUTION: FOR USE IN A CONTROLLED ENVIRONMENT. REFER TO MANUAL FOR ENVIRONMENTAL CONDITION".

- (1) Risk of electrical shock and energy hazard! All models may only be installed by qualified personnel (e.g. IEC60364, VDE0100, VDE0105)! In case of malfunctions or damage, switch off the supply voltage immediately. Please do not try to fix the problem yourself! A qualified technician should examine all failures. Please do not remove the case of the power supply by yourself!
- (2) Risk of electric arcs and electric shock (danger to life). Connecting both the primary and the secondary sides together is not allowed.
- (3) Risk of burn hazard. Do not touch the unit in operation and shortly after disconnection!
- (4) Risk of fire and short circuit. The openings should be protected from foreign objects or dripping liquids.
- (5) Only install the unit in a pollution degree 2 environment (Note.1).
- (6) Please do not install the unit in places with high moisture or near the water.
- (7) The maximum operating temperature is 50°C. Please do not install the unit in places with high ambient temperature or near fire source.
- (8) Output current and output wattage must not exceed the rated value on its specification.
- (9) Disconnect system from supply voltage:
Before commencing any installation, maintenance or modification work: Disconnect your system from supply voltage. Make sure that inadvertent connection in circuit will be impossible!



Installation manual DLP-04R

Note.1: Pollution Degree 2 applies where there is only non-conductive pollution that might temporarily become conductive due to occasional condensation. Generally refer to dry, well-ventilated locations, such as control cabinets.

Manufacturer:

MEAN WELL ENTERPRISES Co., LTD.
No.28, Wuquan 3rd Rd., Wugu Dist.,
New Taipei City 24891, Taiwan
Tel: +886-2-2299-6100
Web: www.meanwell.com

Branch Office:

China

MEAN WELL (GUANGZHOU)
ENTERPRISES Co., LTD.
2F, A Building, Yuean Industry Park,
Huangcun, Dongpu Yown, Tianhe
District, Gungzhou, China
Post Code: 510660
Tel: +86-20-2887-1200
Web: www.meanwell.com.cn

U.S.A

MEAN WELL USA, INC.
44030 Fremont Blvd., Fremont,
CA 94538, U.S.A.
Tel: +1-510-683-8886
Web: www.meanwellusa.com

Europa

MEAN WELL EUROPE B.V.
Langs de Werf 8, 1185XT
Amstelveen, The Netherlands
Tel: +31-20-758-6000
Web: www.meanwell.eu